

Limelight Letter



What's happening at the Limelight Theatre?

Well, apart from the happy band of volunteers who meet every Tuesday and perform various miracles around the place, the committee are busy planning what the rest of 2020 will look like!

*So, here are some **provisional** dates for your diaries -*

Wednesday 15th July at 7.30pm—ANNUAL GENERAL MEETING

Thursday 17th September at 8pm—Opening night for “QUARTET”

(which will run from the 17th September to the 3rd October.)

Saturday 10th October at 8pm—Gala Awards Night (tentative date/to be confirmed)

Thursday 26th November at 7.30pm—Opening Night for “PETER PAN”

which is scheduled to run from the 26th November to the 12th December

As this is a ‘family friendly’ production, evening performances will start at 7.30pm.

All dates above will be confirmed in the next newsletter.

Please don't attempt to make a booking at this stage.

And when all this plus Christmas and New Year celebrations are over -

2021 will open with “Heathers” on the 21st January!

PRESIDENT'S SPOT

Hello members and friends—

The planning is almost complete for 2020—just a few dates to be confirmed with fingers crossed and hopefully no glitches to get in our way!

Most importantly is the AGM, which had to be postponed from April, will now definitely take place at the theatre on Wednesday 15th July at 7.30pm.



We may still need to observe physical distancing at that time, but we already have a plan which will accommodate whatever the rule is at that time.

Obviously, if anything changes in that regard, we will inform members.

Although the nominations previously received will stand, further nominations can be made to our secretary, Richard Tudge, by Wednesday 24th June; these nominations can then be voted on at the meeting. If there are any positions where no nominations have been received, we will accept nominations from the floor. You must be a current financial member to nominate or register your vote at the meeting. You can verify your membership status by contacting Patrick on 0499 954 016 and leaving a message, or by email to membership@limelighttheatre.com.au

You can email Richard on Secretary@limelighttheatre.com.au or mail your nomination to our PO Box 77, Wanneroo WA 6946. Nomination forms can be found on our website.

As promised, below are the links and information for completing certificates.

FOR THOSE WHO WORK FRONT OF HOUSE – YOU NOW NEED TO HAVE AN APPROPRIATE HYGIENE CERTIFICATE

(THOSE OF YOU WITH RSA, PLEASE DO TIER 1. MANAGERS, PLEASE DO TIER 2)

Link to CoVid-19 Registration Page (Creating an Account for either course)

<https://hospitalityhygiene.com/onlinetraining/index.php>

Once registered – choose which course you wish to complete – Tier 1 or 2.

Tier 1 is required for **ALL STAFF** operating in hospitality venues;

Tier 2 is required for at least **ONE** person **AT EACH SHIFT.**

Link to CoVid-19 Training Course – Tier 2 (Venue Hygiene Officer)

You must be registered to follow this link

<https://hospitalityhygiene.com/aha-covid-19-hygiene-officer-course/>

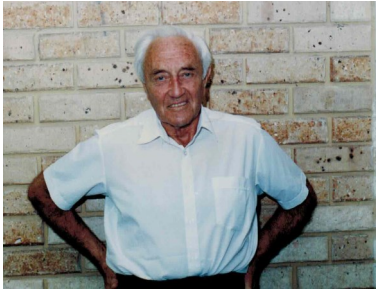
I will be continuing with our Limelight 'history' and theatre quizzes in the newsletter for the next couple of months, but if you are interested in being the newsletter editor, perhaps you could consider putting your hand up at the AGM!

That's all for now folks.

Stay safe, stay well—see you soon!

Shelley

PHOTO HIGHLIGHTS FROM 1991



1991 began with a rehearsed reading of “Under Milkwood” Featured here are just 3 of the cast, David Goodall, who was always our oldest cast member, plus Gordon Park and Andrew Govey who look so very young!



“Bonaventure”, a mystery play was the April production that year. Beth Snowdon (right) was given the nickname of “Rev” at that time, and it stuck for many years after!



The next production in 1991 the delightful musical “Salad Days”, but unfortunately there seems to be no photographs in our archive for this production and end of the year production of “Follies”



These 2 photos are from the September season comedy, “Sisterly Feelings”. The interesting set was designed and constructed by Ken Bayliss and Dave Browning to depict a ‘common’ in Berkshire.



Above a scene from “A Man for All Seasons” and at right a scene from “Sailor Beware” with Andrew Brown, Les Layton and Andrew Govey



IN THE LIMELIGHT 1992

A very full list of productions began in with the classic “A Man for All Seasons”, directed by Robert Benson-Parry. James Hough-Neilson directed the delightful comedy, “Sailor Beware” which as the first in a what was to become a series. “The Sound of Music” followed, directed by Derry Phillips. Then came “The Odd Couple” directed by Andrea DeVaack. A thriller called, “Gone up in smoke” directed by Brenda Redding followed that and the year ended with a musical play of “Peter Pan” directed by Noelann Gandon.

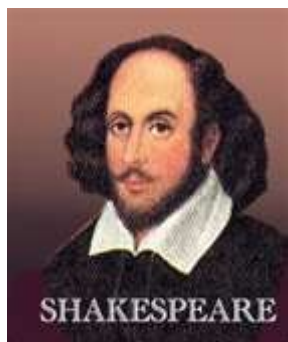


The children from “The Sound of Music”, plus James Hough-Neilson as Captain Von Trapp.

Below—”The Odd Couple” , Daryl Denic & Robert DeVaack; “Gone up in Smoke” and a gang of pirates from “Peter Pan”

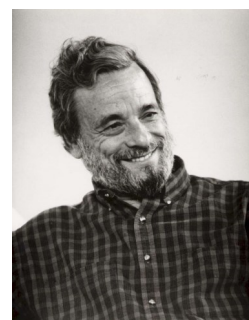
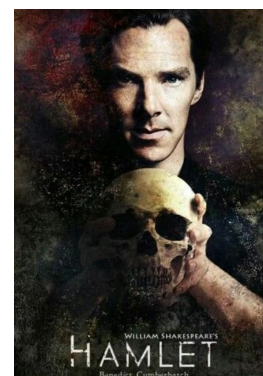


Answers to the 2nd May issue quiz plus some more!



SHAKESPEARE QUIZ—ANSWERS

1. The Taming of the Shrew
2. Henry VI trilogy
3. Macduff
4. Montague
5. The Tempest
6. Shylock
7. Banquo
8. Richard III
9. Hamlet
10. A Midsummer Night's Dream
11. The Winters Tale
12. Richard III



And now for something different!

1. Which actress played Sally Bowles in "Cabaret", Desiree on "A Little Night Music" and almost played Grizabella in the original cast of "Cats"?
2. Which American songwriter served in the French Foreign Legion and was left disabled by a horse riding accident?
3. In "Cabaret", what is the nationality of Cliff in the stage version and the film?
4. How many musicals has Andrew Lloyd Webber collaborated with lyricist Tim Rice? And, can you name them?
5. Which well known composer abandoned an attempt to write a musical based on Mary Poppins in the early 1960's?
6. John Gay's, "The Beggars Opera", is the basis for which Kurt Weill musical?
7. "The Lion King" closely follows the plot of which play by William Shakespeare?
8. "The Little Mermaid" is based on a story by which 19th century writer?
9. There are 6 theatres in London's Shaftesbury Avenue? Can you name them?
10. What caused the closure of the Shaftesbury Theatre in 1973?
11. Who are the 4 composers pictured above?

YOUR CURRENT COMMITTEE AND THEATRE MANAGERS

**PRESIDENT—Shelley McGinn
(president@limelighttheatre.com.au)**

VICE PRESIDENT—Jane Anderson

SECRETARY—Richard Tudge

TREASURER—Mike Gibbs

COMMITTEE MEMBERS

Julie Clark—Maintenance Manager

Carol Binks—Publicity & Marketing

Paul King—Sound Manager

Kathleen Del Casale

Karen Murray

Ashlee Torrens

NON-COMMITTEE

Bookings & Membership—Patrick McGinn

Front of house—RJ Smolders

Wardrobe—Joan Braskic

FOR BOOKINGS

phone—0499 954 016

(Mon, Wed & Fri 9 -12)

Or on line -

www.limelighttheatre.com.au